

Impaired ossification in mice lacking the transcription factor Sp3

Heike Göllner^a, Christian Dani^b, Blaine Phillips^b, Sjaak Philipsen^c, Guntram Suske^{a,*}

^aInstitut für Molekularbiologie und Tumorforschung, Emil-Mannkopff-Straße 2, 35037 Marburg, Germany

^bCentre de Biochimie, UMR 6543 CNRS, Parc Valrose, Université Nice Sophia-Antipolis, 06108 Nice, France

^cDepartment of Cell Biology, Erasmus University Rotterdam, P.O. Box 1738, 3000 DR Rotterdam, The Netherlands

Received 11 April 2001; received in revised form 7 May 2001; accepted 8 May 2001

Abstract

Sp3 is a ubiquitously expressed member of the Sp family of transcription factors. Recently, the mouse *Sp3* gene has been disrupted by homologous recombination. *Sp3 null* mice die immediately after birth due to respiratory failure. In addition, these mice show a pronounced defect in late tooth formation. Here we show that Sp3 is also required for proper skeletal ossification. Both endochondral and intramembranous ossification are impaired in E18.5 *Sp3*^{-/-} embryos. The delay in ossification is reflected by reduced expression of the osteoblast-specific marker gene osteocalcin. The transcription factor – core binding factor 1 (Cbfa1) – that is essential for bone formation, however, is expressed at normal levels. In vitro differentiation studies using *Sp3*^{-/-} ES cells further support the conclusion that Sp3 is needed for correct bone formation. The capacity of *Sp3*^{-/-} cells to undergo osteogenic differentiation in vitro is reduced and *osteocalcin* expression is significantly diminished. Our studies establish Sp3 as an essential transcription factor for late bone development. © 2001 Elsevier Science Ireland Ltd. All rights reserved.

Keywords: Sp3; Transcription factor; Knockout mice; Bone formation; Osteocalcin; Ossification; Skeleton; Osteoblast; ES cells; Embryoid bodies

1. Introduction

Many promoters and enhancers of housekeeping, tissue-specific and viral genes contain functionally important GC-rich DNA motifs. These motifs are recognized by a large family of transcription factors designated as the Sp/XKLF family of transcription (Philipsen and Suske, 1999). The Sp/XKLF family of proteins includes the Sp transcription factors (Sp1, Sp2, Sp3, Sp4, Sp5) characterized by a highly conserved DNA-binding domain at the C-terminus (Harrison et al., 2000; Suske, 1999; Treichel et al., 2001). Sp1, Sp3 and Sp4 are most closely related to each other, manifested by their ability to bind the classical GC-box (GGGCGGG) as well as related motifs with identical affinity. In addition, these three proteins contain glutamine-rich activation domains adjacent to serine/threonine-rich stretches in their N-terminal region. Sp2 also contains glutamine-rich activation domains, but fails to recognize the classical GC-box (Kingsley and Winoto, 1992). Vice versa, Sp5 lacks the glutamine-rich activation domain, but is able to bind the GC-box in vitro (Harrison et al., 2000).

Targeted mutations of the mouse genes encoding Sp1,

Sp3, Sp4 and Sp5 have been reported (Bouwman et al., 2000; Harrison et al., 2000; Marin et al., 1997; Supp et al., 1996). *Sp5 null* mice show no overt phenotype (Harrison et al., 2000), whereas two-third of the *Sp4* knockouts die within the first few days after birth. Viable *Sp4*^{-/-} animals are smaller and the males do not reproduce (Supp et al., 1996). The strongest phenotypes are observed in *Sp1* and *Sp3* mutant mice. *Sp1* targeted embryos die at embryonic day E10 (Marin et al., 1997). *Sp3 null* embryos are retarded in growth and die invariably at birth of respiratory failure. The molecular cause of death is unclear since only minor morphological alterations were observed in the lung, and surfactant protein expression is indistinguishable from that in wild type mice. In addition, *Sp3*^{-/-} mice show a pronounced defect in late tooth development. The dentin/enamel layer of the developing teeth is impaired due to the lack of the ameloblast-specific gene products amelogenin and ameloblastin (Bouwman et al., 2000).

Here we show that bone formation is impaired in *Sp3*^{-/-} mice. Several ossification centres are completely absent in E18.5 *Sp3 null* embryos. The delay in ossification is reflected by reduced expression of the osteoblast-specific marker gene *osteocalcin*. In vitro differentiation studies show further that the capacity of ES cells to differentiate to osteoblasts in vitro is strongly reduced in the absence of

* Corresponding author. Tel.: +49-6421-2866697; fax: +49-6421-2865398.

E-mail address: suske@imt.uni-marburg.de (G. Suske).

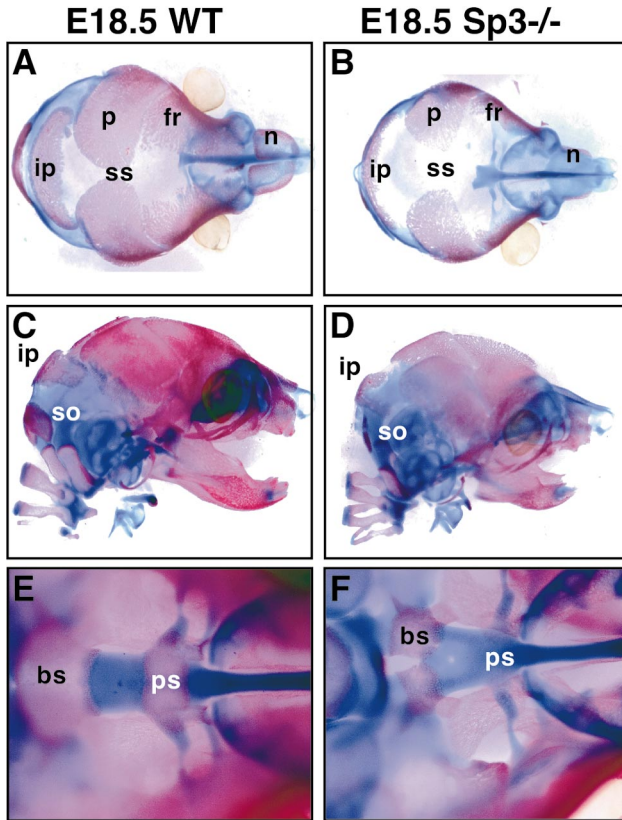


Fig. 1. Skull preparations of wild type (A,C,E) and $Sp3^{-/-}$ (B,D,F) E18.5 embryos stained with Alcian Blue (cartilage) and Alizarin Red (bone). (A,B) Top view of the skull showing incomplete ossification of the intraparietal (ip), parietal (p), frontal (fr) and nasal (n) bone in $Sp3^{-/-}$ mice (B) in comparison to their wild type (A) littermates. The sagittal suture (ss) is wide open in $Sp3^{-/-}$ mice. (C,D) Lateral view of the skull exhibiting differences in the development of the supraoccipital bone (so). (E,F) Ventral view of the caudal part of the skull showing that the basisphenoid bone (bs) is not closed in $Sp3^{-/-}$ embryos (F). Complete absence of an ossification centre is evident in the presphenoid bone (ps) of $Sp3$ knockout mice (F).

$Sp3$. Our studies establish a role for $Sp3$ in late bone development.

2. Results

2.1. Impaired ossification in $Sp3^{-/-}$ mice

Visual inspection of $Sp3$ -deficient E18.5 embryos obtained by Caesarean section occasionally showed embryos with slight deformations of the skull. Most significantly, several embryos contained a swelling at the roof of the skull. In addition, perceptual inspection revealed a tender consistence of the whole embryo. These observations prompted us to examine cartilage and bone development in $Sp3^{-/-}$ mice.

Skeletons of wild type and $Sp3^{-/-}$ E18.5 embryos were prepared, and cartilage and bone visualized by Alcian Blue and Alizarin Red staining, respectively. These analyses

revealed several ossification defects in all parts of the $Sp3^{-/-}$ animals. The skull of E18.5 $Sp3$ -deficient embryos showed an abnormally wide sagittal suture (Fig. 1A,B). Ossification of the frontal, parietal, interparietal, nasal and supraoccipital bones was significantly reduced (Fig. 1A–D). In addition, ossification of several bones of the skull base was also affected. The presphenoid bone of $Sp3$ null mice exhibited an almost complete absence of mineralized bone tissue and the basisphenoid bones were not closed (Fig. 1E,F).

In the trunk region, hypo-ossification of the sternbrae, the vertebral bodies and the atlas dens was evident in $Sp3$ -deficient mice (Fig. 2A–F). The strongest difference was observed in the xiphoid process (Fig. 2G,H). Here, $Sp3^{-/-}$ mice lack completely any ossification centre.

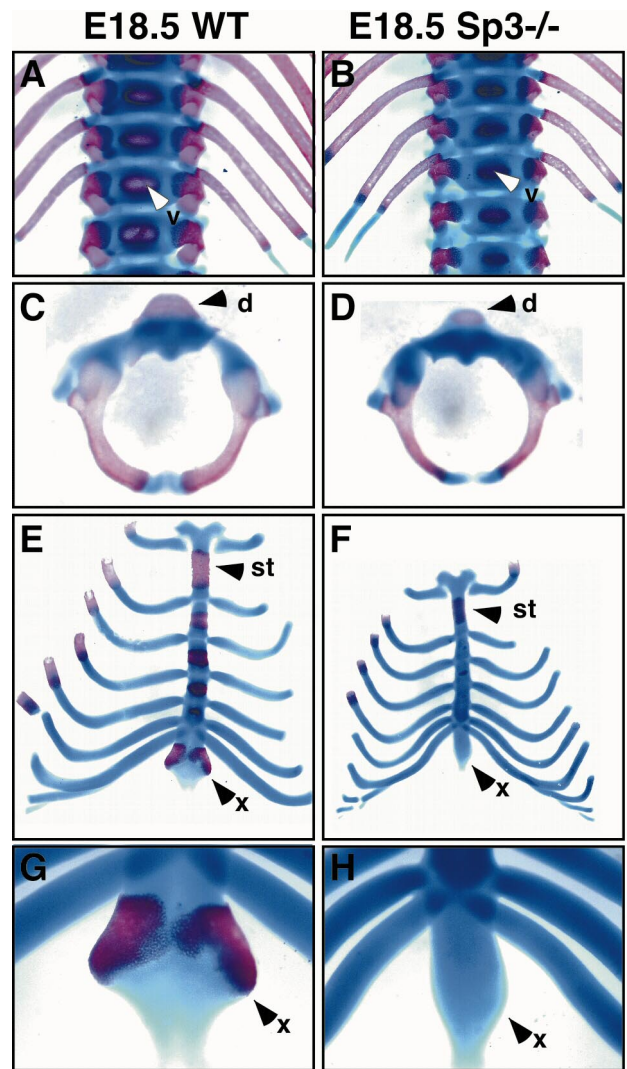


Fig. 2. Trunk preparations of wild type (A,C,E,G) and $Sp3^{-/-}$ (B,D,F,H) E18.5 embryos stained with Alcian Blue (cartilage) and Alizarin Red (bone). Ventral view of the backbone (A,B) and the rib-cage (E,F). The atlas (first cervical vertebra) is shown in (C) and (D). A higher magnification of the processus xiphoideus is shown in (G) and (H). Abbreviations are: d, dens; st, sternbrae; v, vertebral body; x, xiphoid process.

Inspection of the hind and fore paws (Fig. 3) exhibited shorter primary ossification centres in the metacarpals and metatarsi. In the distal and proximal phalanges bone formation was completely absent.

Taken together, these findings show that *Sp3*^{-/-} embryos have several ossification abnormalities during late bone development. Cartilage formation, however, appears to be unaffected by the absence of *Sp3*.

2.2. Expression of the osteocalcin gene is impaired in *Sp3*^{-/-} embryos

Osteoblasts are the bone forming cells that express genes that are required to form the mineralized tissue. We asked whether the altered skeletal ossification pattern of *Sp3*-deficient embryos could be linked to reduced expression of the osteoblast-specific gene products osteopontin and/or osteocalcin. Osteopontin is an acidic glycoprotein secreted at the onset of mineralization (Mark et al., 1988). Besides osteoblasts, several epithelial tissues, such as kidney tubules and uterine epithelium, synthesize osteopontin (Nomura et al., 1988). Osteocalcin, however, is highly bone-specific. It is expressed exclusively in mature osteoblasts during mineralization (Heinrichs et al., 1995). Osteocalcin is found in the mineralized matrix and facilitates the differentiation of osteoclasts (Glowacki et al., 1991; Liggett et al., 1994).

Northern blot analyses were performed with RNA extracted from newborn mice. Transcripts encoding osteopontin were detectable at similar levels in wild type and *Sp3*^{-/-} mice (Fig. 4A). Thus, the expression of this gene is not down-regulated in *Sp3*^{-/-} animals. In contrast, *osteocalcin* mRNA was readily detectable at birth in wild type mice but was almost absent in *Sp3*-deficient mice (Fig.

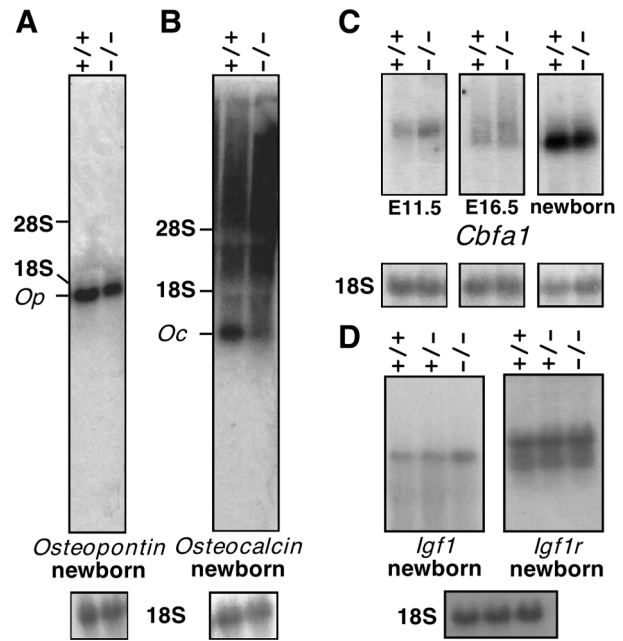


Fig. 4. Expression of putative *Sp3* target genes during bone formation. RNA was extracted from the head of wild type (+/+), *Sp3* +/– (+/–), and *Sp3*-deficient (–/–) embryos or newborn animals as indicated, subjected to electrophoresis through 1.2% formaldehyde-agarose gels and transferred to nylon membranes. The filters were hybridized with cDNA fragments encoding (A) osteopontin (*Op*), (B) osteocalcin (*Oc*), (C) core binding factor 1 (*Cbfa1*) and (D) insulin-like growth factor 1 (*Igf1*) and insulin-like growth factor 1 receptor (*Igf1r*). As a control the filters were probed with an 18S rRNA-specific oligonucleotide (18S).

4B). Thus, delayed ossification in *Sp3*^{-/-} mice is reflected by strongly reduced expression of the *osteocalcin* gene.

2.3. Expression of *Cbfa1*, *Igf1* and *Igf1r* are not affected in *Sp3*^{-/-} mice

Our skeleton analysis suggested a delay of bone formation in *Sp3*-deficient embryos. Thus, we examined next the presence of transcripts encoding proteins regulating bone formation.

A central regulator of osteoblast differentiation and bone development is the transcription factor *Cbfa1* (reviewed in Ducy, 2000). Disruption of the *Cbfa1* gene resulted in complete lack of bone formation (Komori et al., 1997; Otto et al., 1997). Northern blot analyses of RNA from E11.5, E16.5 and newborn mice were performed. These experiments revealed that expression of the *Cbfa1* gene was not affected in *Sp3*-deficient mice (Fig. 4C).

A developmental delay of the appearance of ossification centres was described in *Igf1r*-deficient mice (Liu et al., 1993). Therefore, we analyzed the expression of the *Igf1r* gene and its ligand *Igf1*. Transcripts encoding *Igf1* and *Igf1r* were detectable at similar intensities in wild type, heterozygous and *Sp3*^{-/-} newborn mice (Fig. 4D).

Taken together, delayed ossification in *Sp3*^{-/-} mice cannot be directly linked to reduced expression of the tran-

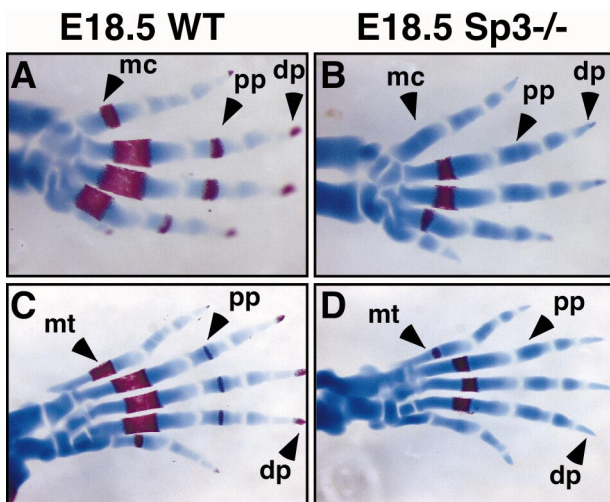


Fig. 3. Limb preparations of wild type (A,C) and *Sp3*^{-/-} (B,D) of E18.5 embryos stained with Alcian Blue (cartilage) and Alizarin Red (bone). Both distal and proximal phalanges (dp and pp, respectively) of the fore paw (A,B) and hind paw (C,D) of normal embryos contain ossification centres completely lacking in their *Sp3*^{-/-} counterparts (indicated by arrowheads). Metacarpals (mc) and metatarsal (mt) bones show reduced ossification.

scription factor *Cbfa1* or the insulin-like growth factor receptor gene *Igf1r* and its ligand *Igf1*.

2.4. Reduced capacity of *Sp3*^{-/-} ES cells to undergo osteoblast differentiation

Our analyses of *Sp3*-deficient embryos showed that *Sp3* contributes to late bone formation. Newborn *Sp3*^{-/-} embryos exhibit only incomplete formation of mineralized bone tissue and expression of the osteoblast-specific protein osteocalcin is strongly reduced. To establish further a role of *Sp3* in bone formation, we analyzed the capacity of recently established *Sp3*^{-/-} embryonic stem (ES) cells (to be published elsewhere) to undergo osteogenic differentiation in vitro. ES cells are pluripotent cells retaining the capacity to generate any cell type in vivo and in vitro (Keller, 1995; Martin, 1981). Culture conditions to differentiate ES cells into osteoblasts at a high rate have been established recently (Phillips et al., 2001).

Wild type *Sp3* +/– and *Sp3*^{-/-} ES cells were allowed to form embryoid bodies (EB), then treated with retinoic acid, replated and maintained in osteogenic differentiation medium. The occurrence of mineralization nodules was determined by von Kossa staining. As shown in Fig. 5A, *Sp3*^{-/-} EBs contain significantly fewer mineralization nodules than wild type derived EBs. Quantitative evaluation revealed that only 15% of differentiated *Sp3*^{-/-} EBs contained mineralization nodules, in contrast to 60% of wild type and heterozygous *Sp3* +/– EBs (Fig. 5B). We also tested the capacity of wild type and *Sp3*^{-/-} EBs to undergo cardiomyocyte differentiation and obtained similar numbers of beating cardiomyocytes independent of the presence or absence of *Sp3* (Fig. 5C). Thus, the reduced capacity of *Sp3*^{-/-} EBs to undergo osteogenesis is not due to a general default of differentiation of *Sp3*^{-/-} cells but is rather specific for certain cell lineages.

We also examined expression of the osteoblast-specific proteins osteocalcin and osteopontin by RT-PCR analyses of RNA obtained from differentiated ES cells. These experiments revealed that expression of *osteopontin* was not affected in *Sp3*^{-/-} mutant cells (data not shown). Expression of *osteocalcin*, however, was strongly reduced in differentiated *Sp3*-deficient EBs (Fig. 5D). Altogether, our results show that the capacity to undergo osteogenesis is significantly reduced in *Sp3*-deficient EBs as compared to wild type or *Sp3* +/– EBs.

3. Discussion

3.1. Bone formation is impaired in *Sp3*-deficient mice

Previous studies have shown that *Sp3* is essential for post-natal survival and late tooth development. In *Sp3* null mice, the dentin/enamel layer of the developing teeth is impaired reflected by the lack of the ameloblast-specific gene products amelogenin and ameloblastin (Bouwman et al.,

2000). The analyses described here show that, in addition, *Sp3* plays an important role in late bone formation. Skeletal ossification in E18.5 *Sp3*^{-/-} embryos is significantly reduced compared to wild type littermates.

During embryonic development, bone formation can occur through two distinct pathways, endochondral and intramembranous ossification (Ducy et al., 2000). In the endochondral ossification pathway a cartilage template surrounded by a bone collar prefigures each future bone, whereas intramembranous ossification does not include any cartilaginous templates. In the latter case, mesenchymal precursor cells differentiate directly into osteoblasts. Our analyses of the skeleton suggest that both ways of bone formation are affected in *Sp3*-deficient mice. The delayed ossification of different skull bones like the parietal, frontal,

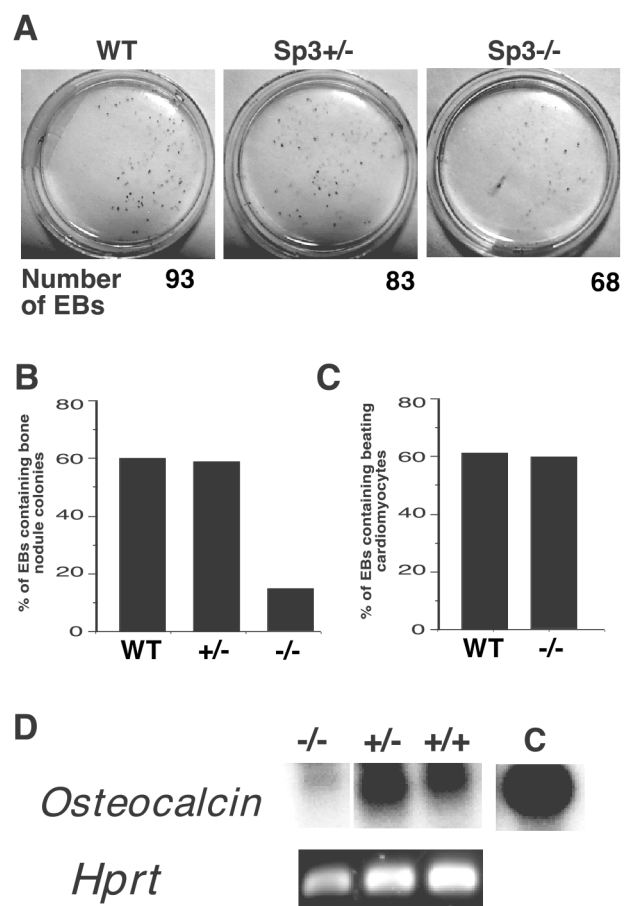


Fig. 5. Differentiation of embryoid bodies (EBs) into osteoblasts and cardiomyocytes. (A) EBs generated from wild type *Sp3* +/– or *Sp3*^{-/-} ES cells were treated with retinoic acid for 3 days and maintained in osteogenic differentiation medium for 15 days. Culture dishes with mineralization nodules visualized by von Kossa staining (dark spots) are shown. (B) Histogram showing the percentage of EBs containing mineralized nodules. (C) Histogram showing the percentage of EBs that contain spontaneously beating cardiomyocytes after plating. The values in (B) and (C) represent the average of two independent determinations. (D) Semi-quantitative RT-PCR with RNA of differentiated wild type (+/+), *Sp3* heterozygous (+/-) and *Sp3*-deficient (-/-) ES cells using *osteocalcin*- or *Hprt*-specific primers. RNA prepared from MC3T3-E1 osteoblasts was used as a positive control (C).

interparietal, nasal and supraoccipital bones refers to delayed intramembranous ossification. Ossification abnormalities of the sternebrae, xiphoid process and the vertebral body are due to a delay in endochondral ossification.

3.2. Osteocalcin expression is impaired in *Sp3*^{-/-} mice

We found that *osteocalcin* expression is strongly reduced in *Sp3*^{-/-} E18.5 embryos. The cell that expresses *osteocalcin* is the osteoblast. Osteoblasts synthesize and secrete several extracellular matrix proteins such as fibronectin, type I collagen, osteopontin, osteocalcin and bone sialoprotein. However, osteocalcin is the only matrix protein that is specific for terminally differentiated osteoblasts. *Osteocalcin* message is expressed just after the onset of bone matrix formation (Cowles et al., 1998). Several potential functions have been attributed to osteocalcin. Its appearance may be a signal to initiate bone turnover, it may facilitate the differentiation of osteoclasts (Glowacki et al., 1991; Liggett et al., 1994) and may function as a negative regulator during the strictly coordinated processes of resorption and formation of new bone by osteoclasts and osteoblasts. Mice mutated in the *osteocalcin* gene have normal bones at birth but increased bone formation at 6 months (Ducy et al., 1996; Wolf, 1996). In E18.5 *Sp3*^{-/-} embryos, however, impaired bone formation correlates with reduced expression of the *osteocalcin* gene in E18.5 *Sp3*-deficient embryos. Probably, the *osteocalcin* gene is not a direct target of *Sp3*. More likely, reduced expression of *osteocalcin* mRNA reflects a time delay of the differentiation of mesenchymal progenitor cells to mature osteoblasts resulting in a reduced number of mature osteoblasts in E18.5 *Sp3*^{-/-} embryos. In that scenario, *Sp3* would contribute to the process of timely coordinated osteoblast differentiation. This interpretation is supported by the in vitro differentiation experiments that show a strongly decreased potential of *Sp3*-deficient EB to undergo osteoblast differentiation accompanied by reduced expression of the *osteocalcin* gene.

3.3. The role of *Sp3* during osteoblast differentiation

The transcription factor *Cbfa1* is a key factor in the transcriptional control of osteoblast differentiation. *Cbfa1*-deficient mice develop a skeleton that is made exclusively of cartilage and osteoblast differentiation never occurs in these mice (Komori et al., 1997; Otto et al., 1997). In addition, *Cbfa1* is a direct regulator of the *osteocalcin* gene in terminally differentiated osteoblasts (Ducy and Karsenty, 1995; Ducy et al., 1997, 1999; Geoffroy et al., 1995; Karsenty et al., 1999). In *Sp3* null mice, however, expression of the *Cbfa1* gene appears not to be affected at any developmental stage investigated (E11.5, E16.5 and newborn mice). However, a minor reduction of *Cbfa1* expression cannot be completely ruled out. Haploinsufficiency of the normal *Cbfa1* product already leads to severe skeleton defects

including hypoplastic clavicles and delayed ossification of cranial bones (Otto et al., 1997).

On the other hand, it has been reported that while the amount of *Cbfa1* mRNA remains constant during osteoblastic differentiation in vitro, the binding activity of the *Cbfa1* protein to DNA increases (Xiao et al., 1998). In addition, *osteocalcin* expression is not strictly dependent on *Cbfa1*. Calvaria-derived cells isolated from *Cbfa1*-deficient E18.5 embryos lacking any *Cbfa1* activity are able to synthesize osteocalcin in the presence of high doses of recombinant hBMP-2 (Komori et al., 1997).

Interestingly, there might be also a joint role of *Cbfa1* and *Sp3* in late tooth development. Incisors of *Cbfa1*^{-/-} mice show abnormal odontoblasts, dentin formation and lack enamel (D'Souza et al., 1999). In *Sp3*^{-/-} newborn mice the dentin/enamel layer is also impaired due to the lack of the enamel matrix proteins ameloblastin and amelogenin (Bouwman et al., 2000).

Evidence exists that osteoblast differentiation can also be controlled in a *Cbfa1*-independent manner. One of the transcription factors that might be involved in this process is a homeobox protein homologous to the *Drosophila distalless* gene *Dlx5*. The skeleton phenotype of *Dlx5*-deficient mice resembles to some extent that seen in *Sp3*^{-/-} mice. They show a delayed ossification of the membranous bones and a milder delay in bone formation in the long bones. Nevertheless, *Cbfa1* expression is not affected (Acampora et al., 1999). Like *Dlx5*, *Sp3* could act either downstream of *Cbfa1* or in a separate regulatory pathway.

4. Experimental procedures

4.1. Northern blot analyses

Total RNA from embryonic mouse tissue was extracted by the guanidinium/isothiocyanate procedure using the Qiagen kit. RNA was separated through 0.8% agarose gels containing 2.2 M formaldehyde and blotted to nylon membranes. Pre-hybridization and hybridization were carried out as described (Braun and Suske, 1998). Gene-specific probes were obtained from appropriate primer sets. Detailed information is available upon request.

4.2. RT-PCR analysis

RNA (500 ng) was reverse transcribed and cDNA amplified using the one-step RT-PCR kit (Qiagen, France). RT reactions were denatured and amplified by 32 (*osteocalcin*) or 26 cycles (*Hprt*). Primer sequences were as indicated for *osteocalcin* (5'-TCTGCTCACTCTGCTGAC-3' and 5'-GGAGCTGCTGTGACATCC-3'), and *Hprt* (5'-GCTCC-ATTCGGATGAGTCTG-3' and 5'-CACAGGACTAGAA-CACCTGC-3'). PCR conditions were 1 min denaturation at 94°C, 1 min annealing at 55°C and 1 min elongation at 72°C. PCR products were analyzed on 1.5% agarose gels,

blotted onto hybrid membrane and hybridized with an osteocalcin-specific probe.

4.3. Skeletal analyses

Animals were mated overnight and females examined for vaginal plug the next morning. Noon of the day of vaginal plug appearance was considered as day 0.5 post-coitum (embryonic day E0.5). For staining of cartilage and bone, animals were skinned, eviscerated and the carcasses stained with Alcian Blue (cartilage) and Alizarin Red (bone) using standard procedures (Hogan et al., 1994).

4.4. In vitro differentiation of ES cells

ES cells were maintained in Glasgow MEM/BHK21 containing 0.23% sodium bicarbonate, 1× MEM essential amino acids, 2 mM glutamine, 1 mM pyruvate, 10^{-4} M β -mercaptoethanol, 10% FBS (ES cell qualified) and leukemia inhibitor factor LIF (1000 U/ml). To induce differentiation, EB were allowed to form (Dani et al., 1997). For differentiation into osteoblasts, EBs were treated with retinoic acid (10^{-7} M) from day 2 to 5 after EB formation, then plated and maintained in osteogenic differentiation medium (50 μ M ascorbic acid phosphate, 10 μ M β -glycerophosphate and 2.5 μ M compactin (Sigma-Aldrich, France)) for 15 days. The number of mineralization nodules was determined by von Kossa staining. Expression of *osteocalcin* was analyzed by semi-quantitative RT-PCR.

Acknowledgements

We thank Iris Rohner for excellent technical assistance. Jörg Klug, Martha Kalff-Suske, Andreas Meinhardt and Alexa Ertmer are gratefully acknowledged for critically reading the manuscript. This work was supported by grants of the Deutsche Forschungsgemeinschaft (SFB397) and the Stiftung P.E. Kempkes.

References

- Acamпора, D., Merlo, G.R., Paleari, L., Zerega, B., Postiglione, M.P., Mantero, S., Bober, E., Barbieri, O., Simeone, A., Levi, G., 1999. Craniofacial, vestibular and bone defects in mice lacking the Distal-less-related gene *Dlx5*. *Development* 126, 3795–3809.
- Bouwman, P., Göllner, H., Elsässer, H.P., Eckhoff, G., Karis, A., Grosveld, F., Philipsen, S., Suske, G., 2000. Transcription factor Sp3 is essential for post-natal survival and late tooth development. *EMBO J.* 19, 655–661.
- Braun, H., Suske, G., 1998. Combinatorial action of HNF3 and Sp family transcription factors in the activation of the rabbit uteroglobin/CC10 promoter. *J. Biol. Chem.* 273, 9821–9828.
- Cowles, E.A., DeRome, M.E., Pastizzo, G., Brailey, L.L., Gronowicz, G.A., 1998. Mineralization and the expression of matrix proteins during in vivo bone development. *Calcif. Tissue Int.* 62, 74–82.
- Dani, C., Smith, A.G., Dessolin, S., Leroy, P., Staccini, L., Villageois, P., Darimont, C., Ailhaud, G., 1997. Differentiation of embryonic stem cells into adipocytes in vitro. *J. Cell Sci.* 110, 1279–1285.
- D'Souza, R.N., Aberg, T., Gaikwad, J., Cavender, A., Owen, M., Karsenty, G., Thesleff, I., 1999. *Cbfa1* is required for epithelial–mesenchymal interactions regulating tooth development in mice. *Development* 126, 2911–2920.
- Ducy, P., 2000. *Cbfa1*: a molecular switch in osteoblast biology. *Dev. Dyn.* 219, 461–471.
- Ducy, P., Karsenty, G., 1995. Two distinct osteoblast-specific cis-acting elements control expression of a mouse osteocalcin gene. *Mol. Cell. Biol.* 15, 1858–1869.
- Ducy, P., Desbois, C., Boyce, B., Pinero, G., Story, B., Dunstan, C., Smith, E., Bonadio, J., Goldstein, S., Gundberg, C., Bradley, A., Karsenty, G., 1996. Increased bone formation in osteocalcin-deficient mice. *Nature* 382, 448–452.
- Ducy, P., Zhang, R., Geoffroy, V., Ridall, A.L., Karsenty, G., 1997. *Osf2/Cbfa1*: a transcriptional activator of osteoblast differentiation. *Cell* 89, 747–754.
- Ducy, P., Starbuck, M., Priemel, M., Shen, J., Pinero, G., Geoffroy, V., Amling, M., Karsenty, G., 1999. A *Cbfa1*-dependent genetic pathway controls bone formation beyond embryonic development. *Genes Dev.* 13, 1025–1036.
- Ducy, P., Schinke, T., Karsenty, G., 2000. The osteoblast: a sophisticated fibroblast under central surveillance. *Science* 289, 1501–1504.
- Geoffroy, V., Ducy, P., Karsenty, G., 1995. A PEBP2 alpha/AML-1-related factor increases osteocalcin promoter activity through its binding to an osteoblast-specific cis-acting element. *J. Biol. Chem.* 270, 30973–30979.
- Glowacki, J., Rey, C., Glimcher, M.J., Cox, K.A., Lian, J., 1991. A role for osteocalcin in osteoclast differentiation. *J. Cell. Biochem.* 45, 292–302.
- Harrison, S.M., Houzelstein, D., Dunwoodie, S.L., Beddington, R.S., 2000. Sp5, a new member of the Sp1 family, is dynamically expressed during development and genetically interacts with brachyury. *Dev. Biol.* 227, 358–372.
- Heinrichs, A.A., Bortell, R., Bourke, M., Lian, J.B., Stein, G.S., Stein, J.L., 1995. Proximal promoter binding protein contributes to developmental, tissue-restricted expression of the rat osteocalcin gene. *J. Cell. Biochem.* 57, 90–100.
- Hogan, B., Beddington, R., Costantini, F., Lacy, E., 1994. *Manipulating the Mouse Embryo: A Laboratory Manual*, 2nd edition. Cold Spring Harbor Laboratory Press, Cold Spring Harbour, NY.
- Karsenty, G., Ducy, P., Starbuck, M., Priemel, M., Shen, J., Geoffroy, V., Amling, M., 1999. *Cbfa1* as a regulator of osteoblast differentiation and function. *Bone* 25, 107–108.
- Keller, G.M., 1995. In vitro differentiation of embryonic stem cells. *Curr. Opin. Cell Biol.* 7, 862–869.
- Kingsley, C., Winoto, A., 1992. Cloning of GT box-binding proteins: a novel Sp1 multigene family regulating T-cell receptor gene expression. *Mol. Cell. Biol.* 12, 4251–4261.
- Komori, T., Yagi, H., Nomura, S., Yamaguchi, A., Sasaki, K., Deguchi, K., Shimizu, Y., Bronson, R.T., Gao, Y.H., Inada, M., Sato, M., Okamoto, R., Kitamura, Y., Yoshiki, S., Kishimoto, T., 1997. Targeted disruption of *Cbfa1* results in a complete lack of bone formation owing to maturational arrest of osteoblasts. *Cell* 89, 755–764.
- Liggett, W.H., Lian, J.B., Greenberger, J.S., Glowacki, J., 1994. Osteocalcin promotes differentiation of osteoclast progenitors from murine long-term bone marrow cultures. *J. Cell. Biochem.* 55, 190–199.
- Liu, J.P., Baker, J., Perkins, A.S., Robertson, E.J., Efstratiadis, A., 1993. Mice carrying null mutations of the genes encoding insulin-like growth factor I (Igf-1) and type I IGF receptor (Igf1r). *Cell* 75, 59–72.
- Marin, M., Karis, A., Visser, P., Grosveld, F., Philipsen, S., 1997. Transcription factor Sp1 is essential for early development but dispensable for cell growth and differentiation. *Cell* 89, 619–628.
- Mark, M.P., Butler, W.T., Prince, C.W., Finkelman, R.D., Ruch, J.V., 1988. Developmental expression of 44-kDa bone phosphoprotein (osteopontin) and bone gamma-carboxyglutamic acid (Gla)-containing protein (osteocalcin) in calcifying tissues of rat. *Differentiation* 37, 123–136.
- Martin, G.R., 1981. Isolation of a pluripotent cell line from early mouse embryos cultured in medium conditioned by teratocarcinoma stem cells. *Proc. Natl. Acad. Sci. USA* 78, 7634–7638.

- Nomura, S., Wills, A.J., Edwards, D.R., Heath, J.K., Hogan, B.L., 1988. Developmental expression of 2ar (osteopontin) and SPARC (osteonection) RNA as revealed by in situ hybridization. *J. Cell Biol.* 106, 441–450.
- Otto, F., Thornell, A.P., Crompton, T., Denzel, A., Gilmour, K.C., Rosewell, I.R., Stamp, G.W., Beddington, R.S., Mundlos, S., Olsen, B.R., Selby, P.B., Owen, M.J., 1997. *Cbfa1*, a candidate gene for cleidocranial dysplasia syndrome, is essential for osteoblast differentiation and bone development. *Cell* 89, 765–771.
- Phillips, B., Belmonte, N., Vernochet, C., Ailhaud, G., Dani, C., 2001. Compactin enhances osteogenesis in murine embryonic stem cells. *Biochem. Biophys. Res. Commun.* (in press).
- Philipsen, S., Suske, G., 1999. A tale of three fingers: the family of mammalian Sp/XKLF transcription factors. *Nucleic Acids Res.* 27, 2991–3000.
- Supp, D.M., Witte, D.P., Branford, W.W., Smith, E.P., Potter, S.S., 1996. Sp4, a member of the Sp1-family of zinc finger transcription factors, is required for normal murine growth, viability, and male fertility. *Dev. Biol.* 176, 284–299.
- Suske, G., 1999. The Sp-family of transcription factors. *Gene* 238, 291–300.
- Treichel, D., Becker, M., Gruss, P., 2001. The novel transcription factor gene *Sp5* exhibits a dynamic and highly restricted expression pattern during mouse embryogenesis. *Mech. Dev.* 101, 175–179.
- Wolf, G., 1996. Function of the bone protein osteocalcin: definitive evidence. *Nutr. Rev.* 54, 332–333.
- Xiao, G., Wang, D., Benson, M.D., Karsenty, G., Franceschi, R.T., 1998. Role of the alpha2-integrin in osteoblast-specific gene expression and activation of the *Osf2* transcription factor. *J. Biol. Chem.* 273, 32988–32994.